

The Chartwell Charities



Supporting the
NHS
since 2005



REG. CHARITY
NO. 1109784



REG. CHARITY
NO. 1162907



THE CHARTWELL TEAMS

The Chartwell Cancer Trust

Hon. Trustees

Michael Douglas
Bobby Beech
Natalie Reilly
Rachel Rogan

The Chartwell Children's Cancer Trust

Hon. Trustees

Michael Douglas
Natalie Reilly
Laurence Adams
Gillian Mariner

Events Committee Members and Executive Staff

Michelle Simpson
Lucy Bramley
Jo Bennett
Rachael Wallis

Michelle Calthorpe
Anna Lacey
Andrew Snelgrove
Stacey Brown

Barbara Field-Holmes
Dr Anil Lakhani
David Apps
Graham Figg

Kevin Kingshott
Lucy Beech
Paula Cook

Shop Management and Volunteers

Croydon

Sara Borg
Sally O'Connell
Margaret Barrett
Lauren Horwood
Ann Tupper
Nish Kumar
Anthea Thorpe

Eileen Swallow
Jo Bodley
Jane Chapman
Jackie Wong
Alfie Brown
Michael Rogan

Selsdon

Lee Smith
Sharon Graham
Zac Khan
Marjorie Beesley
Nikki Greenwood

Jill Beckingham
Diane Longmoor
Evelyn Bayerlein
Retina Condori Quispe
Rasinthika Perera

Tatsfield / Westerham

Jill Moore
Jayne Boyce
Judy Thorpe
Sheila Gauld
Charlotte Rhule
Suzanne Rhule
Lorraine Trueman
Theresa Hobbs
Thomas Brown

Leanne Burrell
Jess Burrell
Frances Emblin
Charlotte Clark
Eleanor Reilly
Michael Barrett
Ethan Douglas-Johnson
Noah Douglas-Johnson

Duke of Edinburgh Volunteers

Demi Stracey
Callum Horton
Olivia Halfpenny-Beeby

Brixton

Ken O'Neill
Chris Brown
Hatice Behcet
Calum Macnab
Alexandra O'Neill
Nadia Nasser

Antonia O'Neill
Christian Sweeney
Grace Cafyn
Carlton Warren
Olivia Brown

Barbara Cole
Pietro Ricciardi
Ben Reilly
Olukemi Sanyaolu
Tsehay Gebretsadek

Tom Brown
Fabrizio Noschese
Adam Feeney
Emily Timmins
Andrew Muspratt

Brixton Yoga

Scott Johnson
Louise Johnson

The Chartwell Cancer Trust

Room 1, Aileen McHugo Building, Westmore Green,
Tatsfield, Westerham TN16 2AG

T: 01959 570322 E: info@chartwellcancertrust.co.uk

W: www.chartwellcancertrust.co.uk



Contents

- 5 Mission Statement
- 6 Who we are
- 7 Where we began
- 8 How we've grown
- 10 Our Projects - The Chartwell Cancer Trust
- 13 Our Projects - The Chartwell Children's Cancer Trust
- 16 Our Charity Shops
- 18 Our Fundraising
- 23 Looking ahead to the future



HOUSE CLEARANCE SPECIALISTS

BRIXTON | BROMLEY | CROYDON | TATSFIELD | SELSDON | WESTERHAM

Making a difference to cancer care!

Declutter and clear your home, garage basement or office and help us change lives today.

We offer house clearance and collection services you can rely on.

We gratefully accept small to large furniture items, books, homeware and clothes for resale in our charity shops.

CURRENTLY YOU CAN FIND US AT:

Acre Lane, Brixton, Mon-Sat, 10am–5pm

Croydon University Hospital, Mon-Fri, 10am–4pm

Addington Road, Selston, Mon-Sat, 9.30am–5.30pm

Westmore Green, Tatsfield, Mon-Sat, 9am–4pm

To arrange a clearance or a collection:
email **info@chartwellcancertrust.co.uk**
or call **01959 570322**

“

DON'T FORGET THAT ADDING GIFT AID BOOSTS YOUR DONATION BY 25%, AT NO COST TO YOU!

”



The Chartwell Cancer Trust

Room 1, Aileen McHugo Building, Westmore Green,
Tatsfield, Westerham TN16 2AG

T: 01959 570322 E: info@chartwellcancertrust.co.uk

W: www.chartwellcancertrust.co.uk





MISSION STATEMENT

“

To provide support to NHS staff and the patients undergoing treatment for cancer and leukaemia in South London, North Kent and East Surrey.

”

WHO WE ARE

The Chartwell Cancer Trust is a vitally important local charity – with an increasingly regional reach.

For the past 15 years, the charity has been raising funds to make improvements to cancer care for patients, families and medical staff across South London, North Kent and East Surrey aiming to change the lives of both adults and children suffering from cancer and leukaemia. Through a variety of fundraising initiatives, the charity has helped to transform healthcare and services across the region by providing funds to improve and enhance patient care.

The charity provides assistance to oncology patients of all ages and staff teams at The Princess Royal University Hospital, Farnborough, Queen Elizabeth Hospital, Woolwich, King's College Hospital, Southwark, Guy's and St Thomas' Hospital and Croydon University Hospital.

We operate from a small office in Tatsfield, Kent run by a small dedicated friendly team and supported by a growing number of volunteers.

“

Through a variety of fundraising initiatives, the charity has helped to transform healthcare and services across the region...

”



WHERE WE BEGAN

The story of The Chartwell Cancer Trust began in 2003 when founder Michael Douglas was first diagnosed with leukaemia and underwent treatment at the Chartwell Cancer and Leukaemia Unit, Princess Royal University Hospital (PRUH), Farnborough.

The waiting times he experienced as a patient were truly eye-opening for Michael, revealing first-hand the challenges the NHS face to maintain excellence in care with limited resources and staffing shortages.

"When I was finally attended to, the nurse explained that she needed a Healthcare Assistant (HCA) to help with the chemotherapy set-up and had been trying to find one for over two hours. Often, when you are diagnosed with an illness like cancer, family and friends will ask you what they can do to help. This set me thinking about just what could be done..."

Michael Douglas, Founder.

“Following his successful treatment in 2005, Michael decided to set up a charity - The Chartwell Cancer Trust - named after the Unit where he was nursed back to health.”

With years of experience in business and the charity sector – serving on various boards and committees including The Sportsman's Aid Society, later to become The Teenage Cancer Trust and Young Epilepsy, Michael knew he had the expertise to make change. Following his successful treatment in 2005, Michael decided to set up a charity – The Chartwell Cancer Trust – named after the Unit where he was nursed back to health. The charity swiftly garnered a groundswell of support locally to fund the additional much needed Healthcare Assistant post.

This act of solidarity and support was just the beginning – marking the start of a very special relationship and a commitment to the Chartwell Cancer and Leukaemia Unit that remains just as strong today. This relationship not only gave the charity its name but has also defined its long-term purpose to make a critical difference to cancer care in all it does.



HOW WE'VE GROWN

The Charity has steadfastly grown since 2005. As our relationship with The Princess Royal University Hospital strengthened, it quickly became clear that the need for financial support within the NHS was far more wide-reaching – ranging from further staff shortages to lack of equipment and outdated facilities.

SINCE OUR FOUNDATION, WE HAVE NEVER LOOKED BACK

We have matured into a charity that now works with local and major hospitals across South London, North Kent and East Surrey – a network that includes Queen Elizabeth Hospital, King's College Hospital, Guy's and St Thomas' Hospital and Croydon University Hospital.

Through our work we serve the boroughs of Bromley, Croydon, Lambeth, Southwark, Woolwich and Greenwich collaborating across these communities to make long-term change to healthcare services.

We are extremely proud to be able to provide long-term and consistent support to oncology staff, patients and families in every way possible.

“We've come a long way in our scale and reach but our ethos and values remain the same with a deep commitment to making a difference at a grass-roots level.”





BRANCHING OUT FOR CHILDREN'S CANCER CARE

Requests for help from Queen Elizabeth Hospital, Woolwich in 2014 led to the start of another very special relationship with the Tiger Ward – the Paediatric Oncology Shared Care Unit within the hospital. Delighted to help as ever, we stepped in to find regular funds to fulfil wish-lists from the teams and families.

Over the years, the scale of support for children's cancer care at Queen Elizabeth Hospital and other hospitals has steadily grown, and reached such a scale that in 2015 we established a separate sister charity which has gone on to become The Chartwell Children's Cancer Trust.

Across the two charities, our supporter base and our fundraising capacity are growing year on year. Today, our

campaigns and appeals are paving the way for change-making initiatives within the NHS and beyond. These include the provision of cutting-edge equipment and transformational technology, ground-breaking research projects, major refurbishments, capital projects and so much more in support of the patients and families themselves.

In 2018 we were so proud to take on our biggest ever challenge – to raise £750,000 to create a state-of-the-art Oncology Unit for children in the new Paediatric Village in Croydon University Hospital, and we're meeting major milestones along the way all the time!

As we look to the future, there is still so much we are committed to achieving with the incredible generosity of our supporters and partners.

OUR PROJECTS –

The Chartwell Cancer Trust

Care, Equipment and Facilities – The Princess Royal University Hospital, Farnborough

We supply long-term financing for a crucial Healthcare Assistant post in The Chartwell Cancer and Leukaemia Unit, The Princess Royal University Hospital (PRUH), Farnborough – a role which provides consistent, compassionate, personal contact with patients and relatives to ensure they experience comfort, dignity and privacy whilst undergoing treatment.

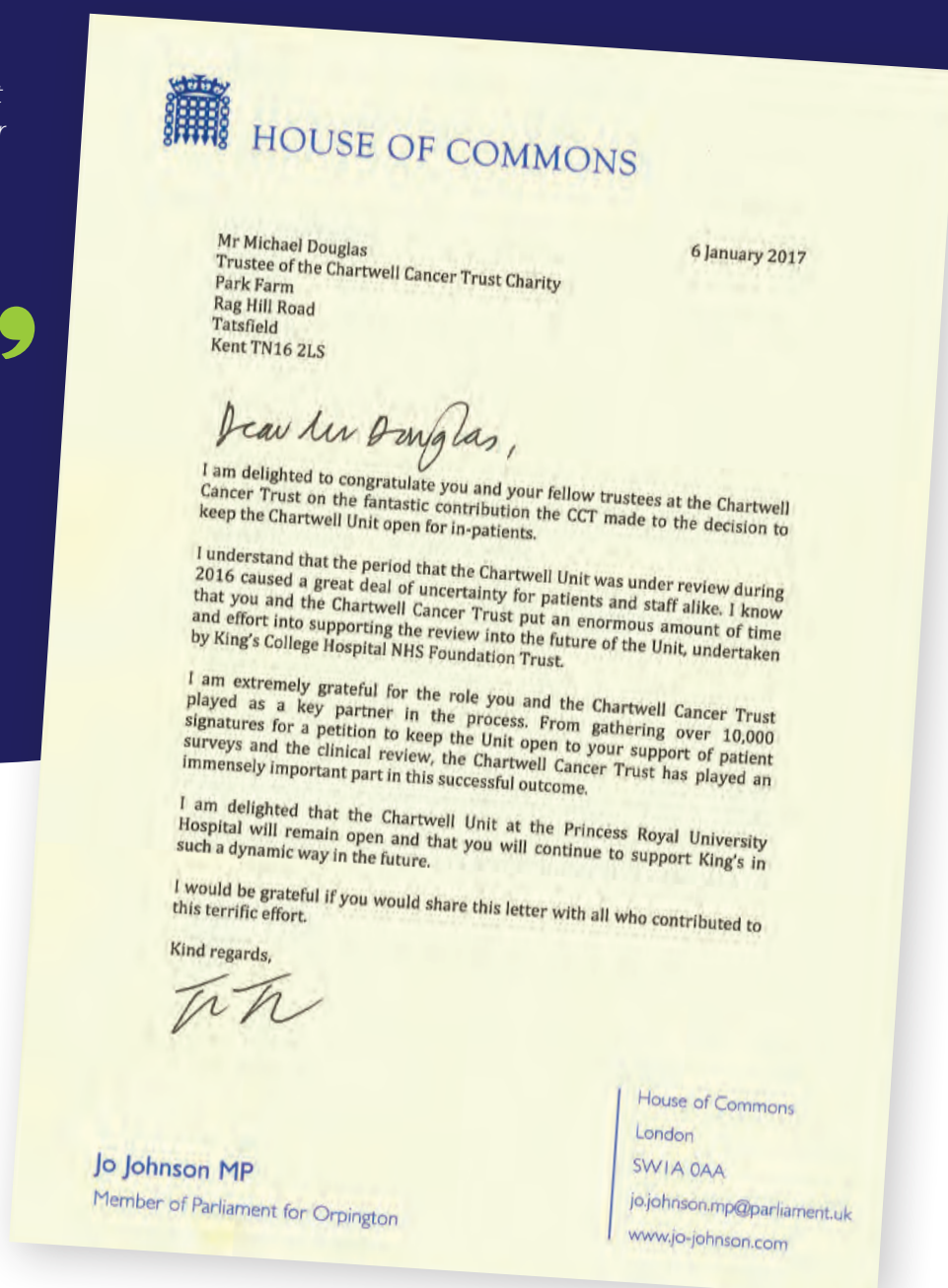
“We are truly grateful to The Chartwell Cancer Trust for their support in looking after our cancer patients over the years. Some of these patients are dangerously ill during their treatment, needing a lot of personal attention. The dedicated support of The Chartwell Cancer Trust allows this to happen”

Dr Prakash Sinha

Consultant Surgeon and Medical Director, PRUH.

Further funding has enabled the total refurbishment of the Treatment Suite, the procurement of a “Virtual Conferencing” facility, a state-of-the-art Breast Ultrasound Scanner, computers, specialist wheelchairs, equipment for the community nursing teams and supplies for the doctors, nurses and patients specifically for the ward – amongst so many other enhancements.

In 2016, we were also instrumental in succeeding to overturn the management decision to permanently close the inpatients unit which protected a vitally important service in the community – an achievement which we are extremely proud of.



Clinical Research – King's College Hospital, London

In 2018, we were delighted to be able to meet an appeal by Dr Shireen Kassam, Consultant Haematologist at King's College Hospital to fund clinical research into the treatment of primary central nervous system lymphoma. Our funding enabled the expansion of a critical Brain Donation Programme in support of the work.

And the following year, we fulfilled a request from Professor John Strouboulis and the Research Team at King's College Hospital to purchase specialist equipment needed to undertake a pioneering gene editing cancer research project.

Both these ground-breaking projects in the development of new cancer therapies have only been made possible because of the generosity of our supporters.

“The support of The Chartwell Cancer Trust is invaluable to this research. It has given us the right environment, people and resources to deliver pioneering research, which has the potential to improve the lives and outcomes of millions of people.”

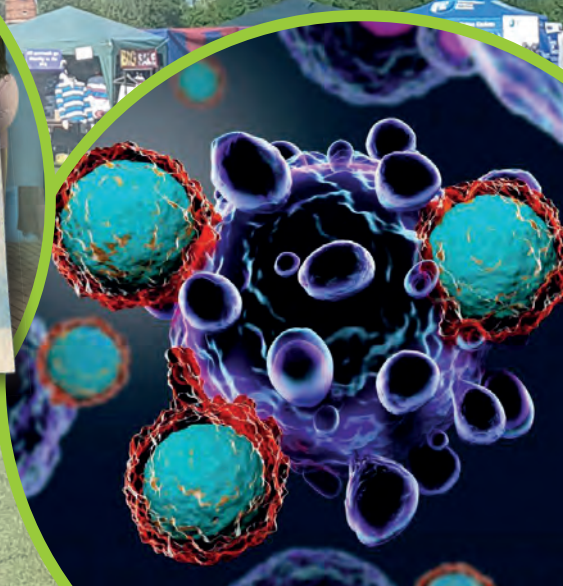
King's College Hospital Impact Report

Capital Projects and Facilities – Croydon University Hospital

With the Lily Pad Appeal, we've teamed up with Croydon Health Services NHS to raise £750,000 to build a new and modernised Oncology Unit, a crucial part of the planned £5m overhaul to integrate Acute Paediatric Services in Croydon University Hospital.

The creation of the new unit will allow for fully effective isolation layouts to ensure infection control, provide specialist equipment, therapy play areas and family facilities, all within a vibrant and uplifting environment.

This critical and long-overdue project will truly leave a long-standing legacy for Croydon – increasing quality of care and patient safety and enhancing workplace conditions for vital medical teams.





Patient and family resources – Early Warning Booklet

Over the years, we have encountered so many patients, parents, loved ones and carers who all tell the same story... something not quite right with their child, physical and behavioural abnormalities, a bad gut-feeling about persistent complaints. Reassurances or dismissals of symptoms leading to misdiagnoses. Lost time and the nagging sense of "if only we'd known and acted earlier".

Awareness and early diagnosis of childhood cancer or leukaemia are everything. Swift action can give adults and children a head-start against these cruel diseases and a fighting chance of survival.

In October 2015, we compiled an Early Warning booklet with patients and families sharing their stories with us, stories of heart-breaking diagnosis and traumatic treatment. We have been circulating this booklet ever since as a vital tool and resource to raise awareness around this topic. In 2020 we launched the updated 2nd edition.



“Awareness and early diagnosis of childhood cancer or leukaemia are everything.”

OUR PROJECTS –

The Chartwell Children's Cancer Trust

Supporting Paediatric Oncology Shared Care Units and Wards

The Tiger Ward, Queen Elizabeth Hospital is a Paediatric Oncology Shared Care Unit where children diagnosed with cancer in South London and surrounding areas receive care closer to home after initial diagnosis.

It has been our long-standing commitment to help the staff to provide a home from home environment for the patients – with up to 85 children undergoing treatment at any one time. We strive to provide them with the same facilities as those provided by Great Ormond Street and Royal Marsden Hospitals. This support has included funding an HCA post, a new kitchen, refurbishments, provision of clinical and therapeutic equipment, delivery of play activities and supply of materials, resources, toys and treats over many years.

In a similar capacity, we are also supporting the Children's Toni & Guy Ward and Philip Issac's Ward Day Unit at King's College Hospital. This work includes upgrading and modernising the oncology rooms, medical equipment, the playroom, the staff, patient and parent areas.

Based on the strength of this work, we have gone on to expand our reach to support the Frog Room at Croydon University Hospital fulfilling wish-lists, undertaking refurbishments to interiors and helping families meet costs associated with transport to and from hospital.

Childhood Support Groups

Aware of just how hard the battle against cancer can be, our support for oncology patients and families does not stop at clinical services and facilities. We also fund and coordinate four Childhood Cancer Support Groups – The Tiger Ward Childhood Cancer Support Group, The Frog Childhood Cancer Support Group, The Bromley Childhood Cancer Support Group and The King's Childhood Cancer Support Group – which includes an additional Teens Group.

Run in conjunction with the children's wards we support, the groups have grown out of the drive and determination of oncology parents themselves who so desperately needed to feel a shared sense of support with others going through the same journey.

We also provide support to families who face the loss of their homes due to the associated hardship when a child is having treatment for cancer and leukaemia.

“These thriving groups offer a lifeline for oncology patients and families – opportunities for children and relatives to relax, connect and make happy memories together in safe environments.”



AV 1 No Isolation Robots – Access to education

As part of our ongoing commitment to enhance cancer care for young people in our local areas, we are working with Norwegian innovators No Isolation to bring inspirational and life-changing technology to young patients, families and schools. We fund and maintain a small army of robots with the ambition to supply as many as is necessary to cover the needs of every child in our catchment area.

This very simple, ingenious technology allows young cancer and leukaemia patients to access their education during and after treatment – virtually attending school, socialising with classmates and remaining connected to their support networks and communities.

We are the first charity to fund these life-changing robots in our local hospitals and schools and we are working hard to expand the use of this technology in the UK. We currently fund and maintain an ever growing army of robots to meet the increasing demand.

“It was wonderful to witness how excited the school staff were to see the robot working and the dawning of the possibilities. Not every day do you get to see how you can change lives at a stroke. It's not only life-changing for the patient; it was clear to me in such a vivid way that enabling her teacher, friends and classmates to interact with her, has a huge and positive impact. It was quite overwhelming to be honest.”

Teacher,
Queen Elizabeth Hospital School, Woolwich

“Thanks to the robot, my son is now able to keep up with his core subjects – it's incredible to see him tune into class on the move between appointments and immerse himself in his lessons during check-ups and chemotherapy sessions.”

Kerri Baker.





Holiday facilities, the Isle of Wight

Sophie's Wish is a three-bedroom luxury lodge for up to a family of six offering a spacious lounge-dining area with a fully fitted kitchen, a family bathroom and a second WC, with master, double and twin bedrooms. The lodge was acquired with funds raised by the Powell family in memory of their daughter Sophie.

We fund and maintain the holiday home throughout the year for use by oncology families, who are welcome to stay for a holiday or weekend break.

Critically, the lodge is located close to a Paediatric Oncology Unit on the island so that oncology families can enjoy family time away, safe in the knowledge that they can access medical facilities with ease.



OUR CHARITY SHOPS

SERVICES WE PROVIDE

A huge part of the fundraising we do is through our charity shops which rely on the generosity of local residents and supporters. These shops are lively hubs on high streets across South London and Kent, where people can connect and share while they pick up treasures and bargains.

All proceeds help us reach our fundraising targets allowing us to provide direct support for oncology patients and families, as well as much needed enhancements to NHS facilities and equipment.



Acre Lane, Brixton

The Chartwell Cancer Trust's Charity Shop on Acre Lane, Brixton – generously donated by Lexadon and the Knight Family, sells a range of clothing, high-quality furniture, pictures and paintings, books and object d'art. A huge array of unique items – something for everyone at affordable prices.

*41-43 Acre Lane, Brixton,
London SW2 5TN
Mon – Sat, 10am – 5pm*

Brixton Yoga and Fitness Studio

Stillpoint Yoga Brixton is a yoga, mindfulness and community event space in the heart of South London supporting The Chartwell Cancer Trust. Our bright, spacious studio is perfect to hire for yoga classes, Pilates, Zumba, photo shoots, workshops and much more – Stillpoint Yoga Brixton is a lovely bright room with mats, blankets and blocks provided. Perfectly situated between Brixton and Clapham North underground stations, making it a very accessible venue.



Addington Road, Selsdon

We have recently taken on new premises on Addington Road, a bustling high street in Selsdon, to add to our growing portfolio of shops. Proceeds from the shop will support the Lily Pad Appeal – our biggest fundraising challenge yet to create a brand new, critically needed Oncology Unit for Croydon University Hospital.

*208 Addington Road CR2 8LD (next to Iceland),
Mon – Sat, 9.30am – 5.30pm*



Our other charity shops include:

Croydon University Hospital
530 London Road CR7 7YE
Mon – Fri, 10am – 4pm

Westerham
5 The Green,
Westerham TN16 1AS
Sat – Sun, 10am – 4pm

Tatsfield
1 The Parade,
Westmore Green,
Tatsfield TN16 2AQ
Mon – Fri, 9am – 4pm,
Sat, 10.30am – 4pm



Recycling

Our charity shops allow communities to recycle and clear unwanted clutter and items whilst making change in the lives of others. As we expand our shops, we need donations more than ever. We gratefully accept clothing, shoes, books, homeware, crockery, CDs, DVDs, vinyl, chairs and tables. Please drop off unwanted items to a shop near you or contact us to arrange a free collection. For further information, please call 01959 570322. All donations will be checked and approved for sale. House clearance services are also available free of charge.

For further information, please call our office on 01959 570322 or email info@chartwellcancertrust.co.uk.

“Don't forget that adding gift aid boosts your donation by 25%, at no cost to you!”

Volunteering

There are opportunities to help out in our charity shops and fundraising activities, connect with your communities and gain skills and experience. If you would like to get involved and join the team, please contact us at **01959 570322** or info@chartwellcancertrust.co.uk

OUR FUNDRAISING

We rely on our amazing supporters, the local community, local businesses and those who have been affected or suffering with cancer to get involved and support us.

Over the years, individuals as well as groups of friends, families, schools and colleagues have rallied around and taken on weird and wonderful challenges in the name of our causes and campaigns. We are grateful to each and every one of you!

There are so many ways you too can get involved and support us...

MAKE A ONE-OFF DONATION: If you prefer, you can make a one-off donation for any amount you choose. Every single donation we receive is put to good use immediately, as you get to choose where the money is spent.

“

It takes just a couple of minutes to set up a direct debit which is effective immediately!

”



BE A PATRON: Make a regular donation and a lasting commitment to the quality of care and treatment we provide. It can be any amount you choose with no fixed tie-ins giving you total flexibility and control.

LEAVE A LEGACY: Make a lasting difference by donating in memory of or to commemorate a loved one in a special way by supporting more people with cancer and their families. Legacies are also generally exempt from inheritance tax and 10% legacies reduce personal IHT from 40% to 36%.

RAISE MONEY: Join an event of any shape, size or challenge, whether it's a skydive, run, walk or cycle, dinner or gala evening. Host your own or attend one of our events we organise throughout the year. Whatever you decide, we will support you every step of the way.

PARTNER WITH US / NOMINATE US AS YOUR CHARITY OF THE YEAR: We work alongside local companies, organisations, clubs and schools who organise a series of events and challenges throughout the year. Staff, parents, children and club members who have voted for us really get on board, get involved and raise amazing funds for our cause.

VOLUNTEER: Donate some of your time to do something worthwhile. Helping others will elevate your spirits and make you proud to give something back to your local community.

“
We have achieved huge things
but the battle against cancer
continues ...
”

Why choose us?

We are a local charity serving the local communities across multiple boroughs.

You will see the real benefits of your efforts with your contribution working close to home and the well-being of the community enhanced with the added confidence that you know where your money is being spent.



WAYS TO DONATE

Making a donation couldn't be simpler!

The Chartwell Cancer Trust

By debit/credit card:

www.chartwellcancertrust.co.uk/donate/

Bank Transfer: Barclays

Account No: 10643394

Sort Code: 20-14-33

The Chartwell Children's Cancer Trust

By debit/credit card:

www.childchartwellcancertrust.co.uk/donate/

Bank Transfer: Barclays

Account No: 73930467

Sort Code: 20-18-93

By post:

Please send a cheque with the completed donation form opposite.

“

Don't forget for every £1 you donate, we receive an additional 25p from the Inland Revenue at no cost to you.

”



I WOULD LIKE TO MAKE A DONATION TO: *(Please Tick)*

- ☐ THE CHARTWELL CANCER TRUST
- ☐ THE CHARTWELL CHILDREN'S CANCER TRUST
- ☐ THE CHARTWELL CANCER TRUST LILY PAD APPEAL

Other Project Please Specify

Your details:

Name:

Address:

..... Postcode:

Tel:

Email:

I enclose a cheque payable to *(please circle your choice):*

The Chartwell Cancer Trust / The Chartwell Children's Cancer Trust / The Chartwell Cancer Trust – Lily Pad Appeal / Other Project Please Specify

GIFT AID IT! For every £1 you donate, we receive an additional 25p from the Inland Revenue at no cost to you

I am a UK Tax Payer and happy for you to claim Gift Aid on my donation at no extra cost to me ☐

Signature: **Date:**

I am happy to receive information about the charity via email or post ☐

I am happy for you to add my details to the charity database ☐

The Chartwell Cancer Trust

Aileen McHugo Building, Westmore Green,
Tatsfield, Westerham TN16 2AG

T: 01959 570322 **E:** info@chartwellcancertrust.co.uk

W: www.chartwellcancertrust.co.uk



Looking ahead to the future

We've never felt the importance of the NHS more acutely and now, more than ever, they need our help to rise to ongoing challenges in the wake of Covid-19.

Cancer and leukaemia patients are in a very high-risk group as a result of the immunocompromised state they are left in immediately during and after treatment. Treatment for oncology patients must continue and the services we help to fund will enable this to happen safely and effectively.

We have an unerring commitment to serving these communities and to helping the NHS to go above and beyond in their provision of care and their standards of excellence.

We simply couldn't deliver on our mission and make the impact we do without the help of our supporters.



“We hope you will join us and stay with us on the journey ahead!”



The Chartwell Cancer Trust

Room 1, Aileen McHugo Building, Westmore Green,
Tatsfield, Westerham TN16 2AG

T: 01959 570322 **E:** info@chartwellcancertrust.co.uk

W: www.chartwellcancertrust.co.uk



Services offered at your local **Day Lewis Pharmacy**



Repeat
Medication



Blood Pressure
Checks



Weight
Management



Minor Ailments
Advice



Smoking
Cessation



Travel
Clinic



Sexual
Health



Health
Checks



Family
Planning



New Medicine
Advice

Get SMS Alerts when your
medicines are ready to collect
For electronic prescriptions only

Visit
sms.daylewis.co.uk



Where to find us?

Balham
Brixton
Bromley
Forest Hill
Fulham
Peckham Rye



Pop in and speak to us!

Join the conversation:



@DayLewisGroup



@Day Lewis Pharmacy



@DayLewisPharmacy

Brochure kindly sponsored by Day Lewis plc